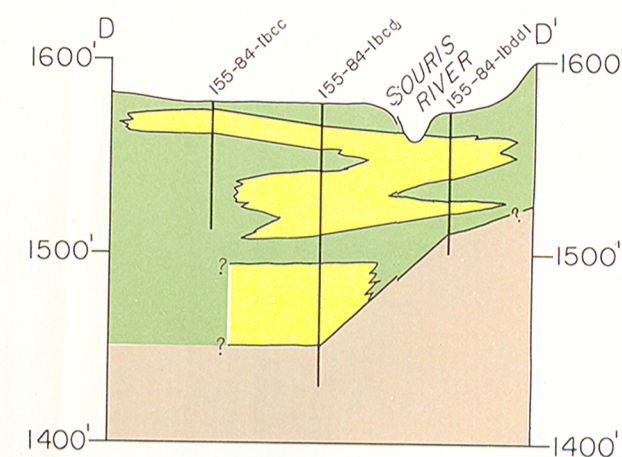
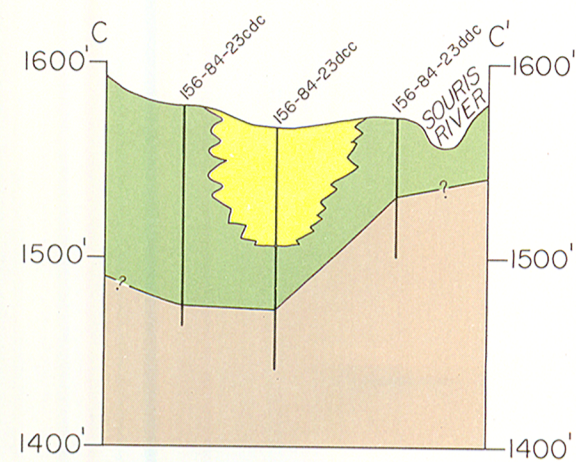
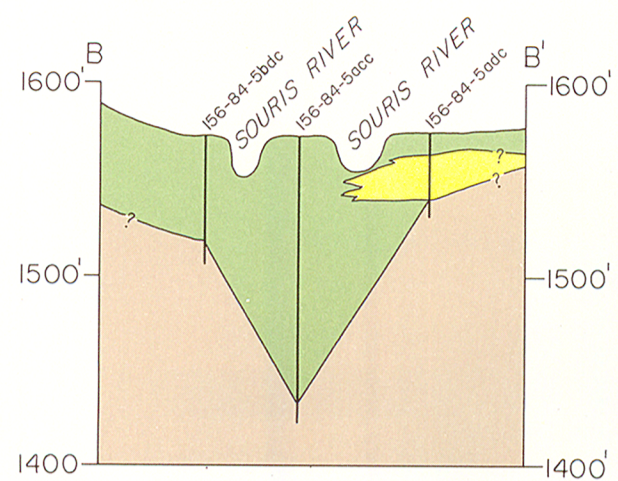
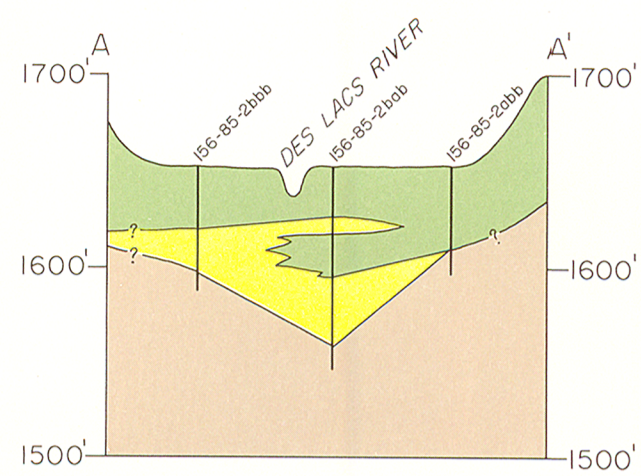
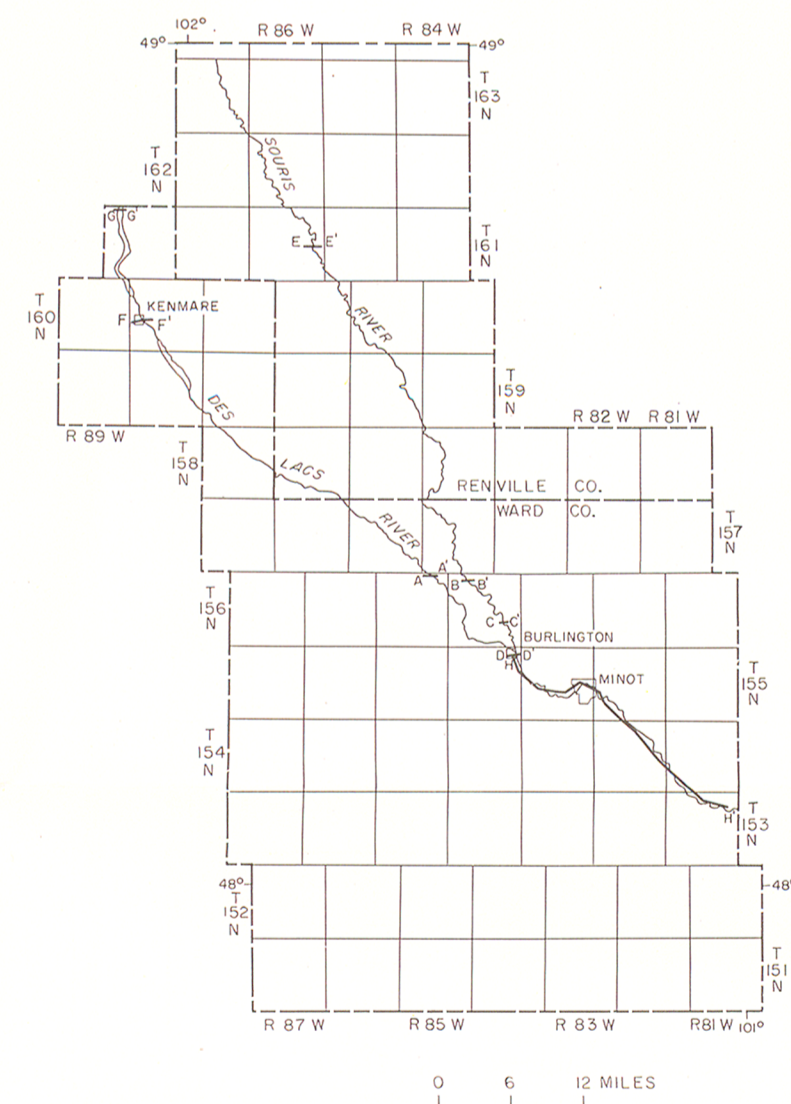
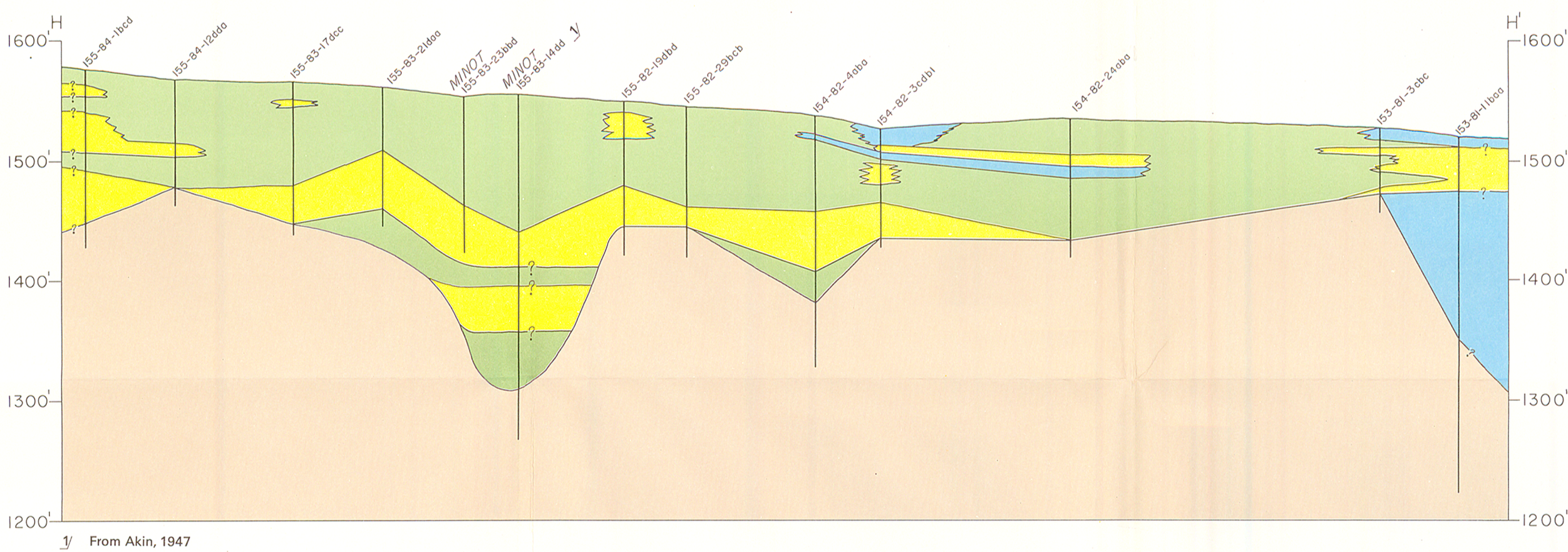
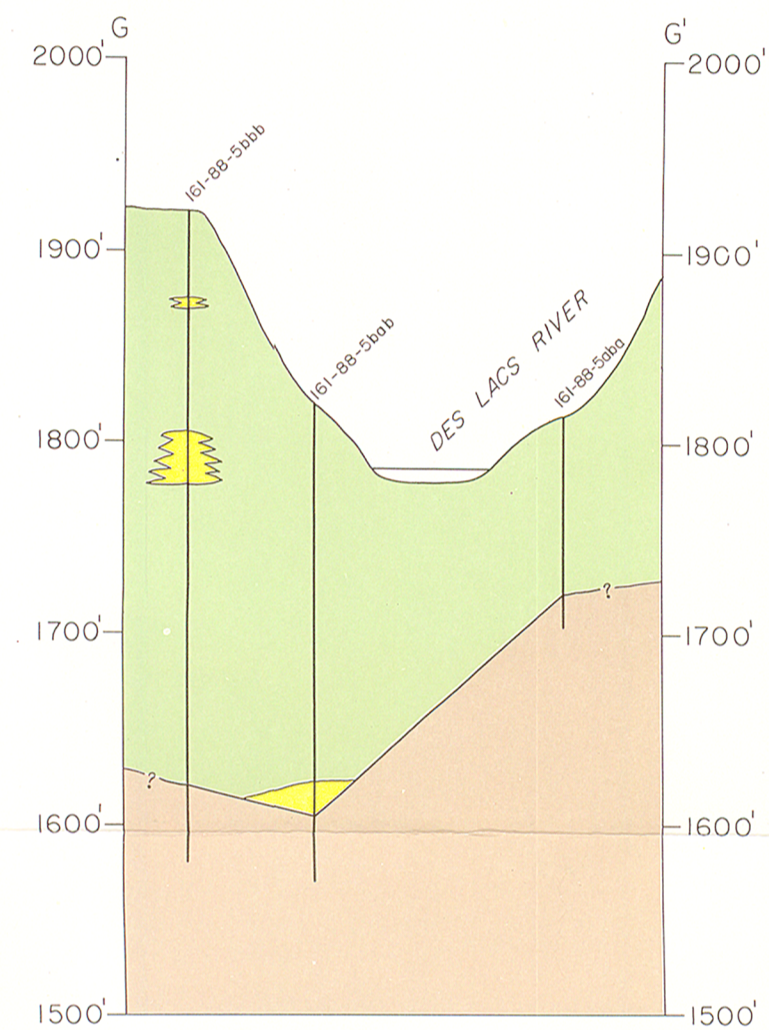
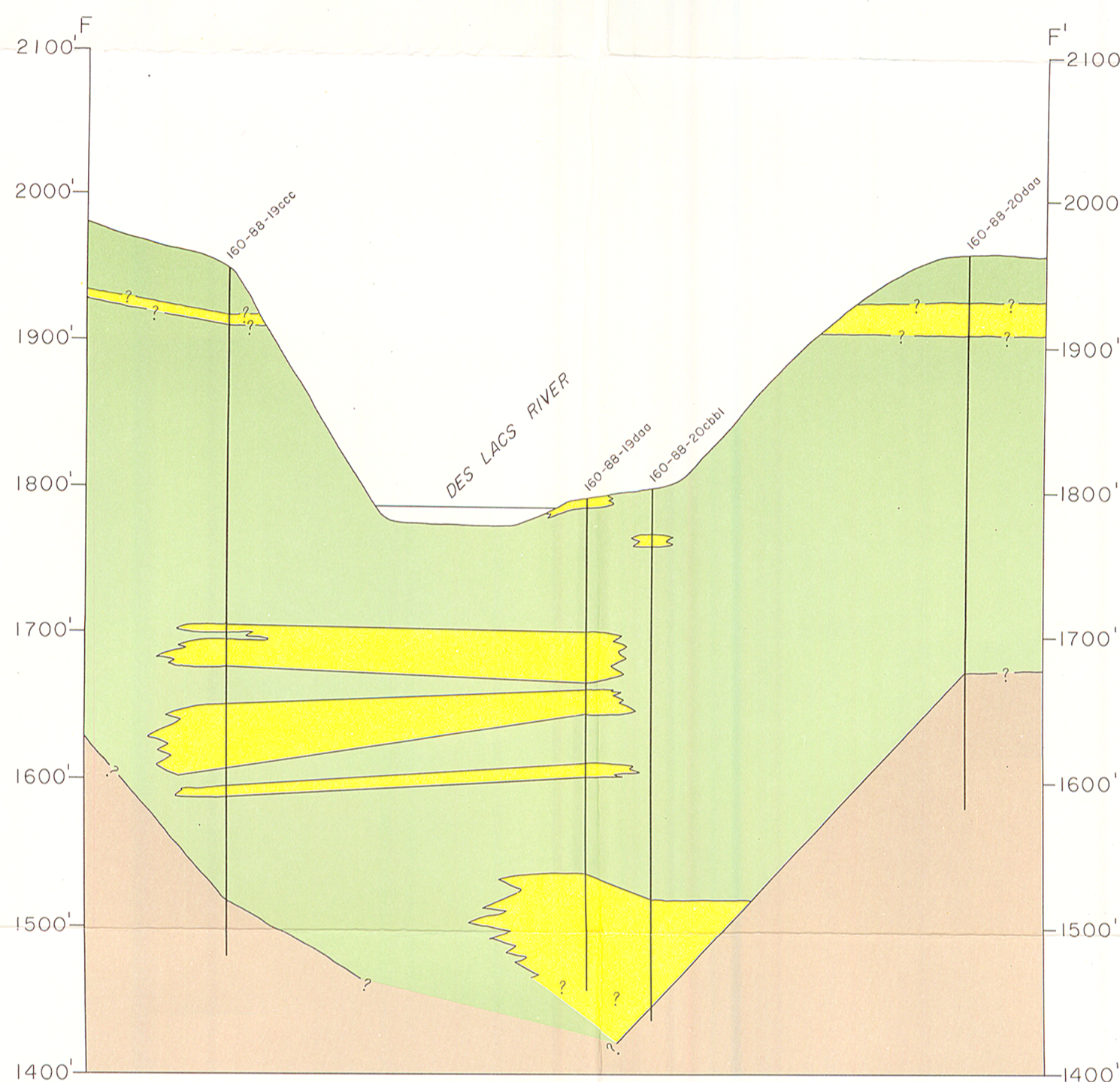
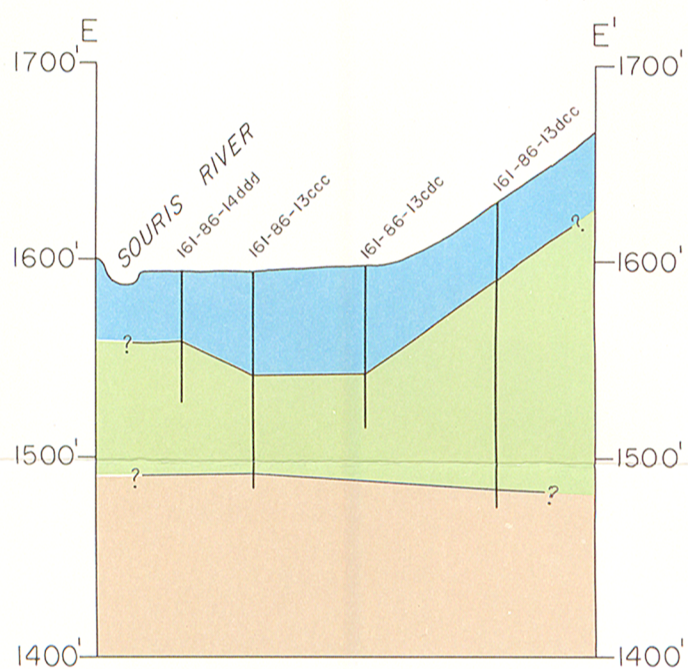


PLATE 1.—MAP SHOWING GROUND-WATER AVAILABILITY FROM GLACIAL DRIFT AQUIFERS IN RENVILLE AND WARD COUNTIES, NORTH DAKOTA

BASE PREPARED FROM NORTH DAKOTA HIGHWAY DEPARTMENT COUNTY HIGHWAY MAPS



Scale for sections A through G
Vertical exaggeration X20
Datum is mean sea level



From Akin, 1947

Vertical exaggeration X53
Datum is mean sea level

EXPLANATION

- Till
- Clay and (or) silt
- Sand and gravel
- Bedrock

PLATE 2.—GEOLOGIC SECTIONS OF THE SOURIS AND DES LACS RIVER VALLEYS, RENVILLE AND WARD COUNTIES, NORTH DAKOTA