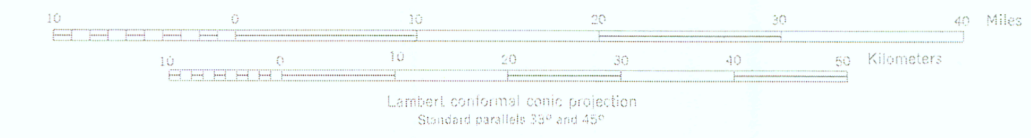
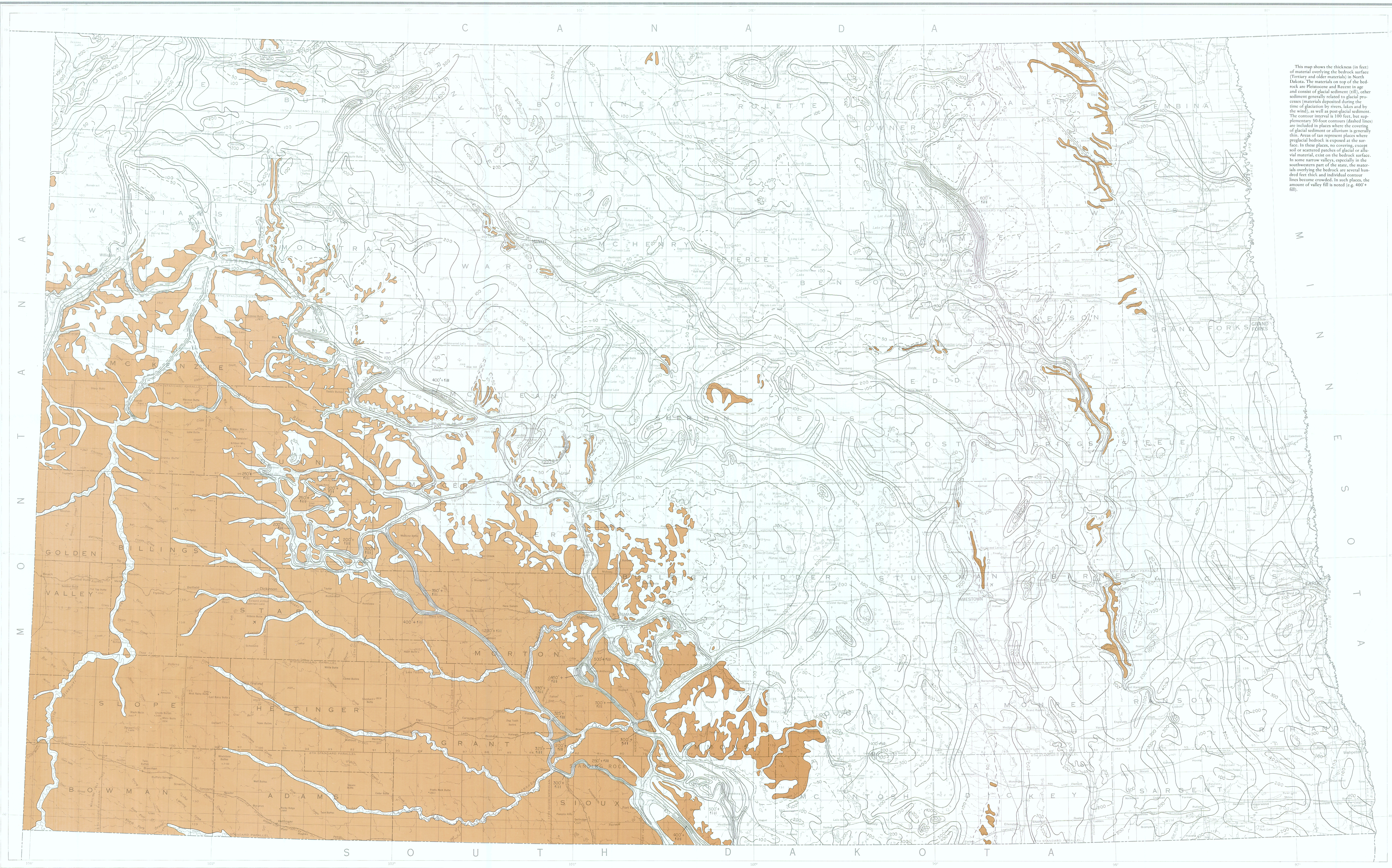


DEPTH TO BEDROCK IN NORTH DAKOTA

By John P. Bluemle
1986



NORTH DAKOTA GEOLOGICAL SURVEY
MISCELLANEOUS MAP NO. 26
Sidney B. Anderson, Acting State Geologist



This map shows the thickness (in feet) of material overlying the bedrock surface (Tertiary and older materials) in North Dakota. The materials on top of the bedrock are Pleistocene and Recent in age and consist of glacial sediment (till), other sediment generally related to glacial processes (materials deposited during the time of glaciation by rivers, lakes and by the wind), as well as post-glacial sediment. The contour interval is 100 feet, but supplementary 50-foot contours (dashed lines) are included in places where the covering of glacial sediment or alluvium is generally thin. Areas of tan represent places where preglacial bedrock is exposed at the surface. In these places, no covering, except soil or scattered patches of glacial or alluvial material, exist on the bedrock surface. In some narrow valleys, especially in the southwestern part of the state, the materials overlying the bedrock are several hundred feet thick and individual contour lines become crowded. In such places, the amount of valley fill is noted (e.g. 400+ fill).